

DESCRIPTION AND USES

Concreate Concrete Flooring:

Enjoy the contemporary look and durability of real concrete floors without the challenges of pouring and finishing a slab.

Concreate flooring planks, just ½-inch thick, have tongue and groove edges and ends to simplify installation and micro-beveled edges for ease of cleaning and visual appeal. Planks install quickly and cleanly with adhesives.

Use Concrete and Wood Together:

Concreate Floors can be installed with suitable wood floors as long as they have the same thickness, tongue and groove edges!

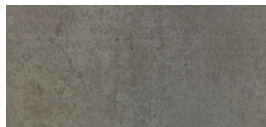


PHYSICAL ATTRIBUTES

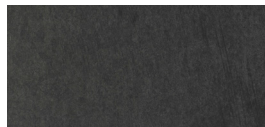
STANDARD COLORS AND WOOD VENEER



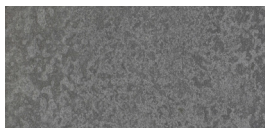
CF101
Natural Grey
Concrete



CF102
Dark Grey
Concrete



CF107
Titanium Black
Concrete



CF108
Metal Grey
Concrete

SIZE, AREA, AND MASS

Thickness: 14 mm (½ inch)

Concrete Planks:

- Size: 1200 x 300 mm (47-¼ x 11-¾ inch)
- Area: 0.36 m² (3.88 sq.ft.)
- Mass: 18.06 kg/m² (3.70 lb./sq.ft.)

COMPOSITION

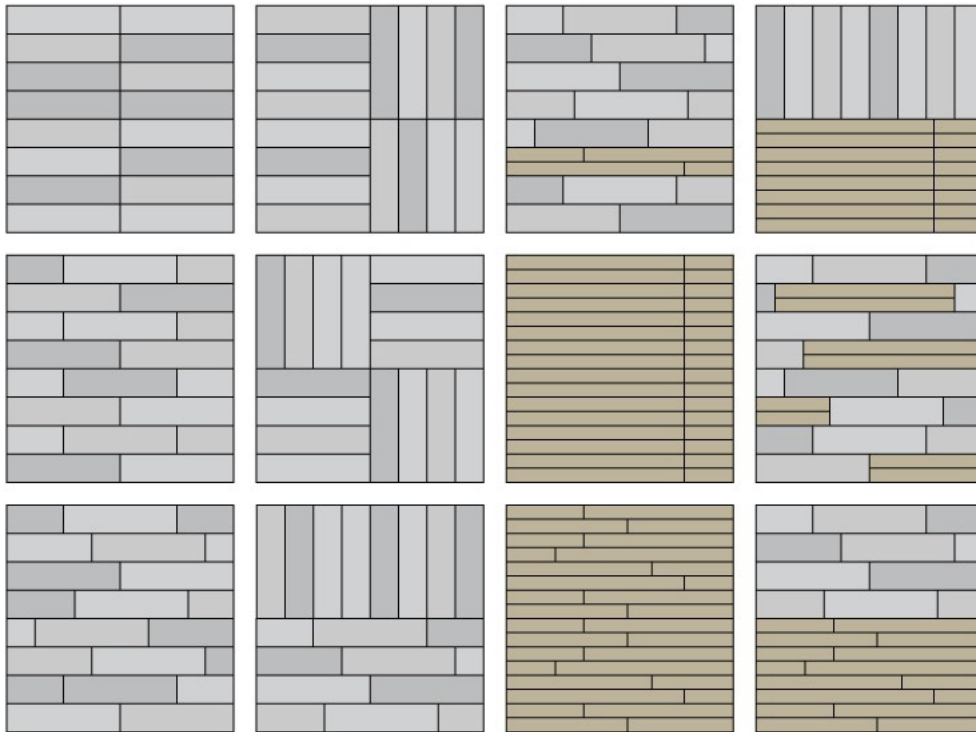
Base Layer: The 10 mm (3/8-inch) thick base layer is a specially formulated hydraulic cement mixed with recycled fibers. This cement requires only half the energy used to produce portland cement, reducing the CO2 emissions required to manufacture Concreate.

Oil Finish: Our floors are finished with three coats of high solids, natural oils to increase the luster, durability, and stain.

TESTING DATA

ATTRIBUTE	PROTOCOL	PERFORMANCE	COMMENT
VISUAL			
Colorfastness	ISO 105-B02	Grade 3-4	
Response to Water	ASTM C1185	<ul style="list-style-type: none"> • 20.6% Water Absorption • 0.05% Moisture Movement 	
Chemical Resistance	EN 423	Class 0 - No Affect <ul style="list-style-type: none"> • White vinegar • Isopropyl alcohol • Mineral oil • NaOH (5%) • Bleach (5.25% NaOCl) • Olive Oil • Red & white wine • Coffee & tea 	Class 1- Very Slight <ul style="list-style-type: none"> • Hydrochloric acid (5% HCl) • Sulfuric acid (5% H₂SO₄)
SAFETY			
Ignitability	EN ISO 9239-1 EN ISO 11925-02	Class Bfl-s1	
Slip Resistance	DIN 51130	<ul style="list-style-type: none"> • Mean overall acceptance angle (to horizontal) = 12.5° • Slip resistance assessment group = R1 	
	ANSI A137.1	Wet dynamic coefficient of friction (DCOF) = 0.31 average	
	EN 13983	α = 0.42	
	Pendulum Test Value (PTV), Method AS 4663	<ul style="list-style-type: none"> • 45 PTV before abrasion • 50 PTV after 500 abrasion cycles 	Sustainable Slip Resistance after wear.
ENVIRONMENTAL			
Volatile Organic Compound (VOC)	CDPH Method V1.1	Compliant for schools and offices.	CA Spec, 01350
Formaldehyde	EN 717-1	ND (Not Detectable)	
Impact Sound	EN ISO 717-2	Impact Sound Improvement Index: ΔL _w = 14 dB	

DESIGN GUIDE AND FEATURES



Left: Optional layout combinations of Concreate and compatible wood flooring!

WOOD
 CONCRETE

SUSTAINABILITY

Our products have been independently tested for conformance with environmental requirements for VOC & formaldehyde emissions, asbestos, lead and cadmium content.

LIMITED WARRANTY

Concreate provides a 10-year warranty for single-family, owner-occupied homes and condominiums; and a 5-year warranty on other projects. Visit www.Concreate.net for more detailed warranty information.

CONTACT INFORMATION

Concreate Headquarters:
 1730 E Holly Ave Ste 728
 El Segundo, CA 90245

+1 855.265.2116
www.Concreate.net
info@concreate.net

DEALER IMPRINT AND SUBMITTAL STAMPS

© ® 2015, Concreate LLC. Issued 2016-10, subject to change. Disclaimer: This information only a general guide and is not intended to be exhaustive. It is for use by qualified design and construction professionals only. Further information is available upon request.